

BOARD UPDATE

PROSPER INDEPENDENT SCHOOL DISTRICT



JOYCE HALL ELEMENTARY SCHOOL (ES #15)

AS OF FEBRUARY 2022

WORK COMPLETED AND ONGOING:

Site

- Atmos gas riser has been installed. Final connections and testing to be completed
- Irrigation installation ongoing
- Minimal site grading ongoing

Building

- Shelter roof has been dried in
- CMU walls ongoing and MEP rough-in ongoing – shelter
- Roof deck installation ongoing – administration, kitchen and cafetorium
- Joist installation ongoing – Areas 1, 2 and 3
- Metal stud framing ongoing – administration
- Above ceiling MEP ongoing – Area 4
- Kitchen hoods are ready to be installed once the roof has been completed
- RTU curb installation – Area 4 and clerestory

Aerial - Looking Northeast



BOARD UPDATE

PROSPER INDEPENDENT SCHOOL DISTRICT



JOYCE HALL ELEMENTARY SCHOOL (ES #15)

AS OF FEBRUARY 2022

Aerial - Looking Northwest



Aerial - Looking Southeast



BOARD UPDATE

PROSPER INDEPENDENT SCHOOL DISTRICT



JOYCE HALL ELEMENTARY SCHOOL (ES #15)

AS OF FEBRUARY 2022

Aerial - Looking Southwest



Entry Tower



BOARD UPDATE

PROSPER INDEPENDENT SCHOOL DISTRICT



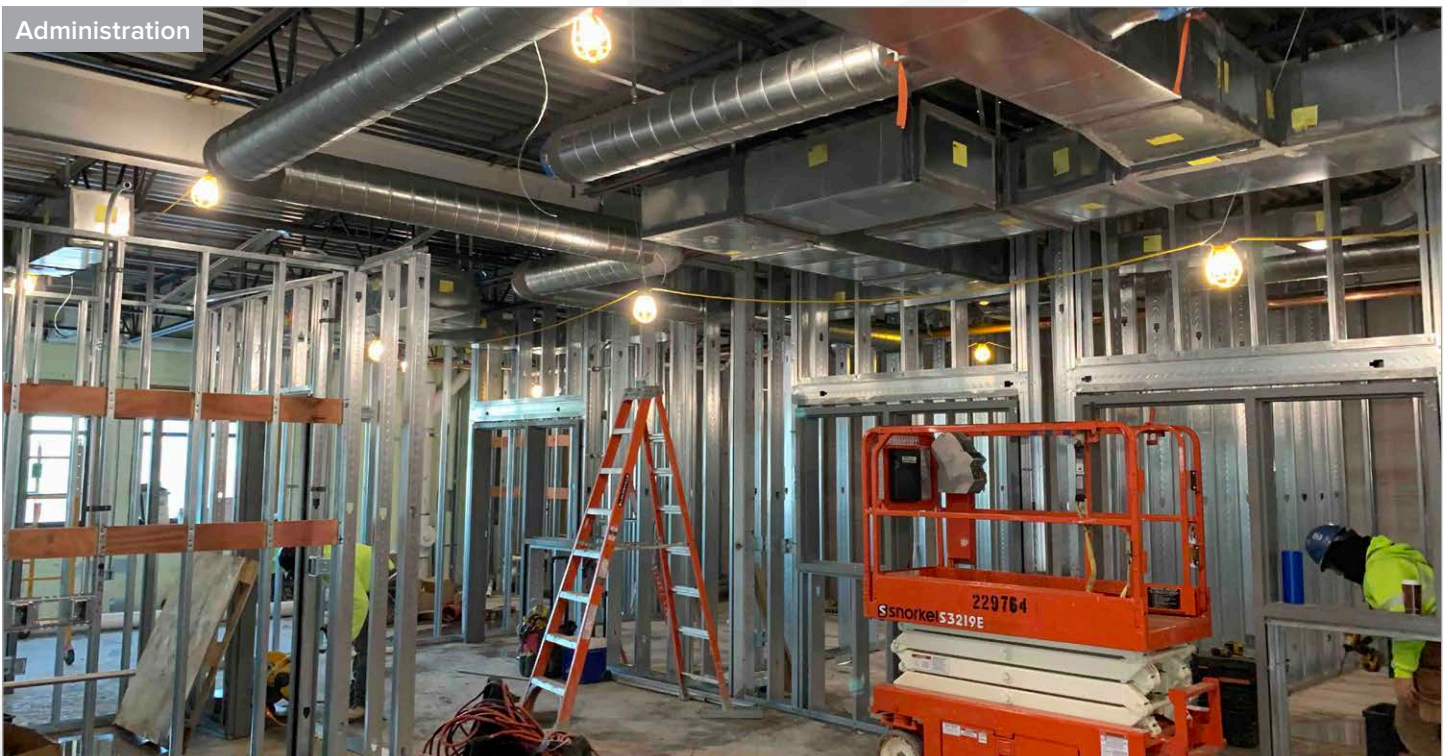
JOYCE HALL ELEMENTARY SCHOOL (ES #15)

AS OF FEBRUARY 2022

Main Entry Corridor



Administration



BOARD UPDATE

PROSPER INDEPENDENT SCHOOL DISTRICT



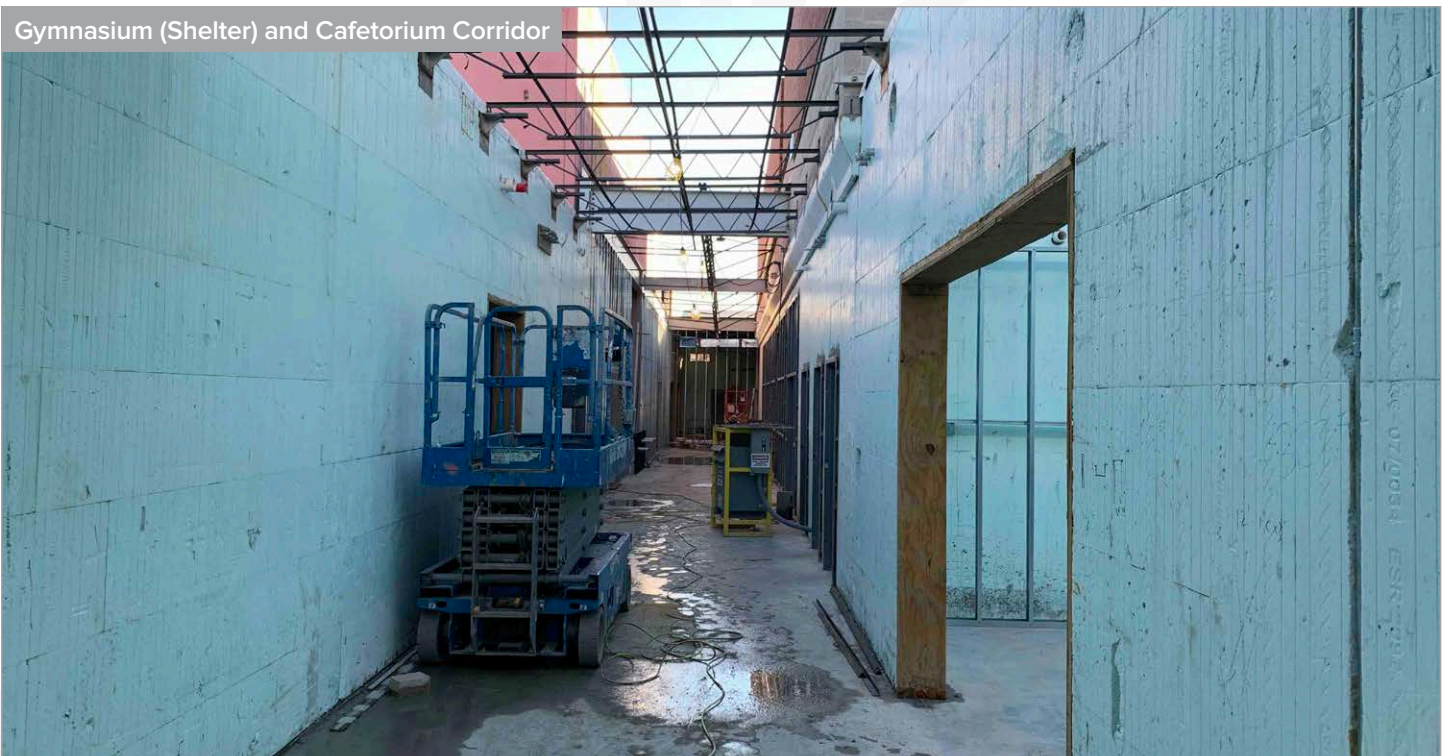
JOYCE HALL ELEMENTARY SCHOOL (ES #15)

AS OF FEBRUARY 2022

Academic Wing



Gymnasium (Shelter) and Cafetorium Corridor



BOARD UPDATE

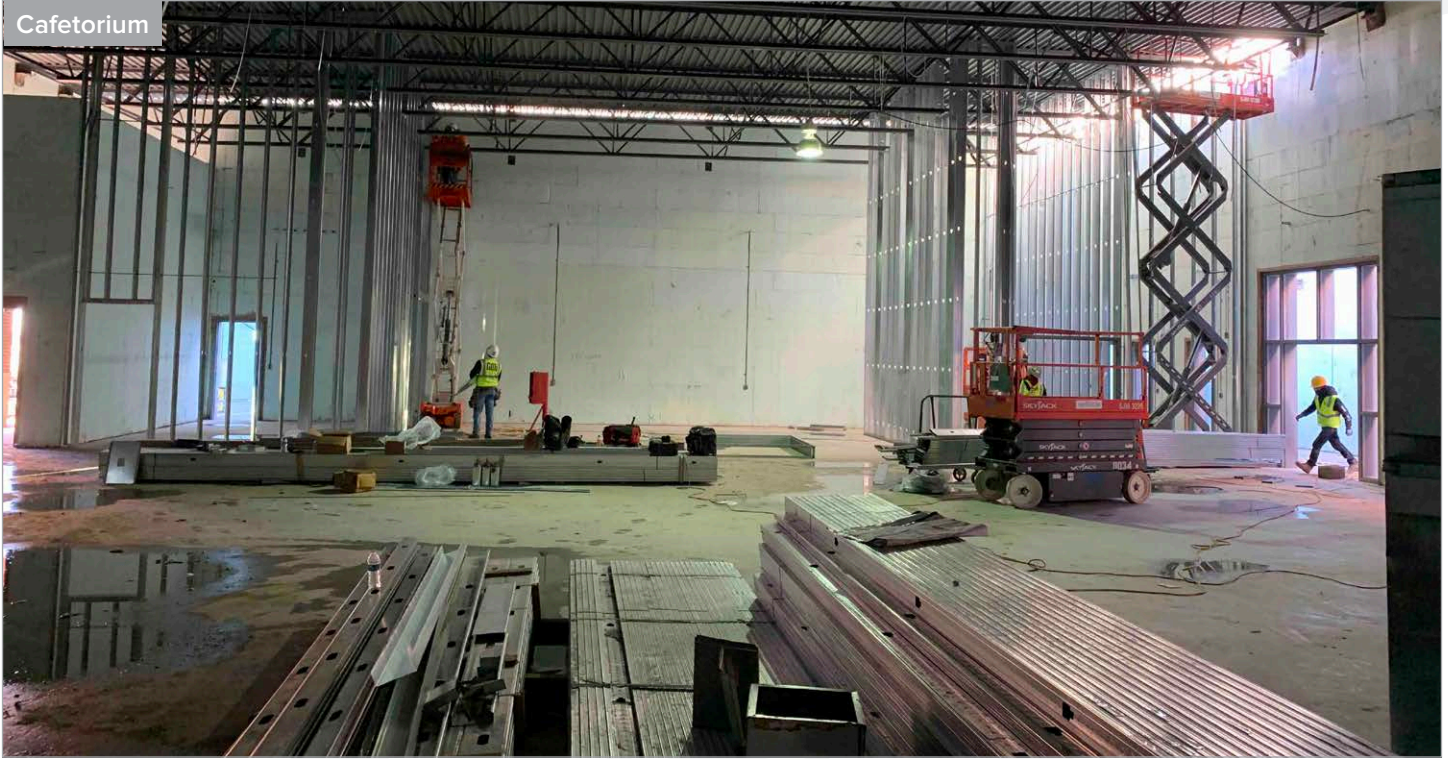
PROSPER INDEPENDENT SCHOOL DISTRICT



JOYCE HALL ELEMENTARY SCHOOL (ES #15)

AS OF FEBRUARY 2022

Cafetorium



Kitchen



BOARD UPDATE

PROSPER INDEPENDENT SCHOOL DISTRICT



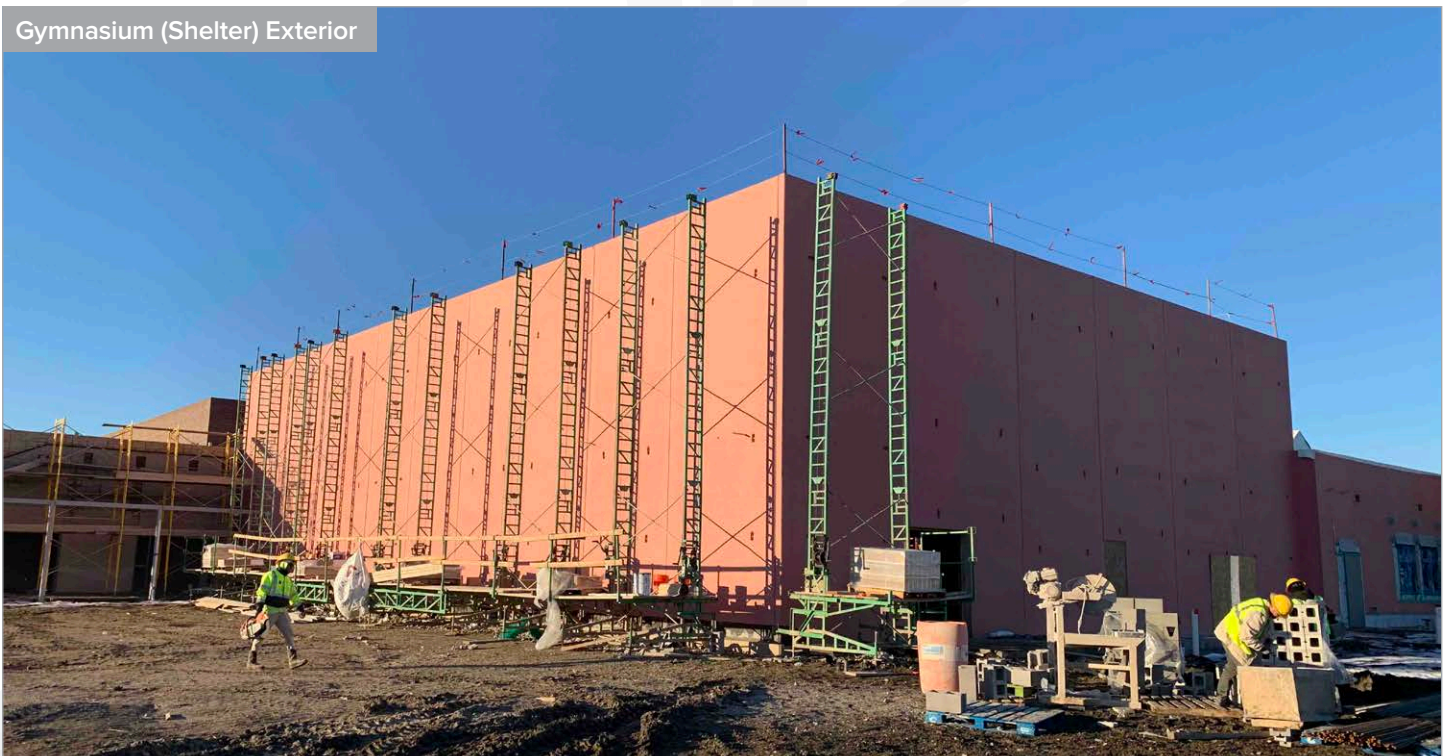
JOYCE HALL ELEMENTARY SCHOOL (ES #15)

AS OF FEBRUARY 2022

Gymnasium (Shelter)



Gymnasium (Shelter) Exterior



BOARD UPDATE

PROSPER INDEPENDENT SCHOOL DISTRICT



JOYCE HALL ELEMENTARY SCHOOL (ES #15)

AS OF FEBRUARY 2022

Rear Entry



Rear Playground Area



BOARD UPDATE

PROSPER INDEPENDENT SCHOOL DISTRICT



WALNUT GROVE HIGH SCHOOL (HS#3)

AS OF FEBRUARY 2022

WORK COMPLETED AND ONGOING:

Site

- Fire lane placement ongoing
- Placement of parking areas south of the main building
- Backfilling retaining wall A
- Installation of retaining wall B ongoing
- Installation of retaining walls at the baseball field ongoing
- Site grading ongoing
- East public road has been completed
- Site grading for sidewalks ongoing
- Site light pole installation ongoing
- Main electrical conduit installation to begin

Building

- Grade beam placement on ancillary buildings ongoing
- Grade beams for main building complete other than – Areas H and J which will be complete by end of the week
- Grading for slab pours – Areas F and G
- MEP underground installation ongoing – Areas F, J, K and L
- Structural steel ongoing – Area A
- Floor deck complete on the first floor – Area A
- Roof deck beginning – Area A
- Installation of hangers and supports for MEP ongoing – Area A
- Structural steel delivered – Area B
- CMU walls ongoing – Area P, Q and R
- Vertical construction approved by Town of Prosper – Areas A, B, P, Q, R and S

Aerial - Looking Northeast



BOARD UPDATE

PROSPER INDEPENDENT SCHOOL DISTRICT



WALNUT GROVE HIGH SCHOOL (HS#3)

AS OF FEBRUARY 2022

Aerial - Looking Northwest



Aerial - Looking Southeast



BOARD UPDATE

PROSPER INDEPENDENT SCHOOL DISTRICT



WALNUT GROVE HIGH SCHOOL (HS#3)

AS OF FEBRUARY 2022

Aerial - Looking Southwest



Main Entry through Student Commons



BOARD UPDATE

PROSPER INDEPENDENT SCHOOL DISTRICT



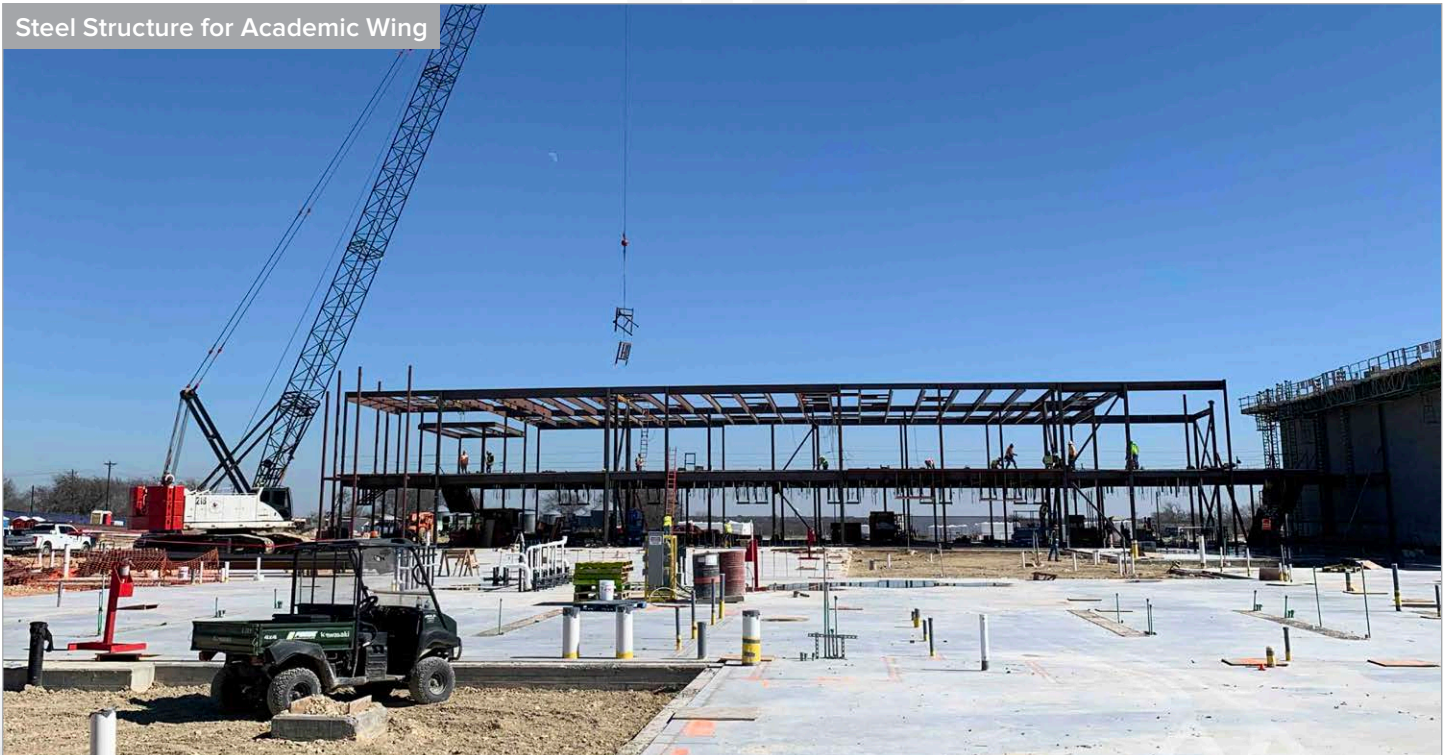
WALNUT GROVE HIGH SCHOOL (HS#3)

AS OF FEBRUARY 2022

Formwork for Columns at Student Commons



Steel Structure for Academic Wing



BOARD UPDATE

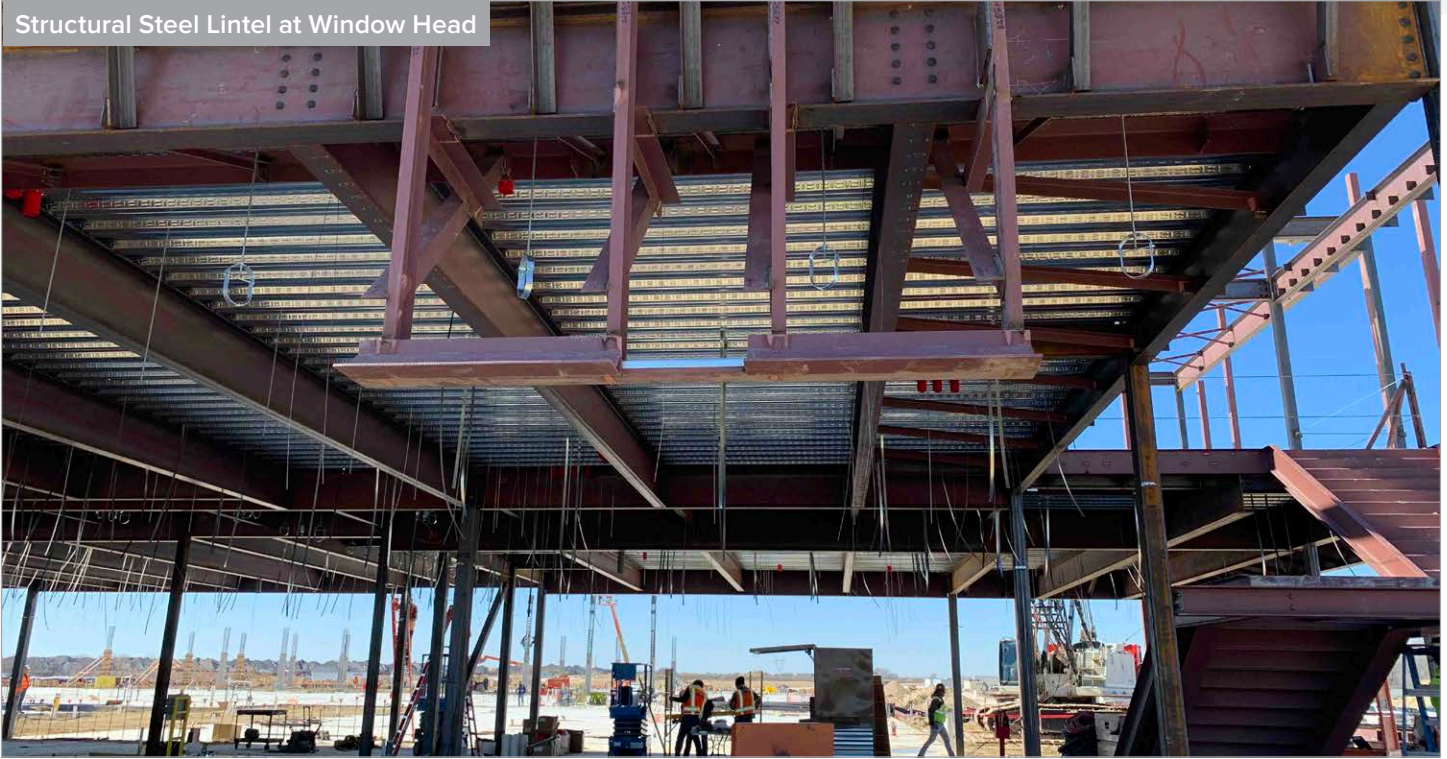
PROSPER INDEPENDENT SCHOOL DISTRICT



WALNUT GROVE HIGH SCHOOL (HS#3)

AS OF FEBRUARY 2022

Structural Steel Lintel at Window Head



Floor Deck and Above Ceiling Pipe Supports



BOARD UPDATE

PROSPER INDEPENDENT SCHOOL DISTRICT



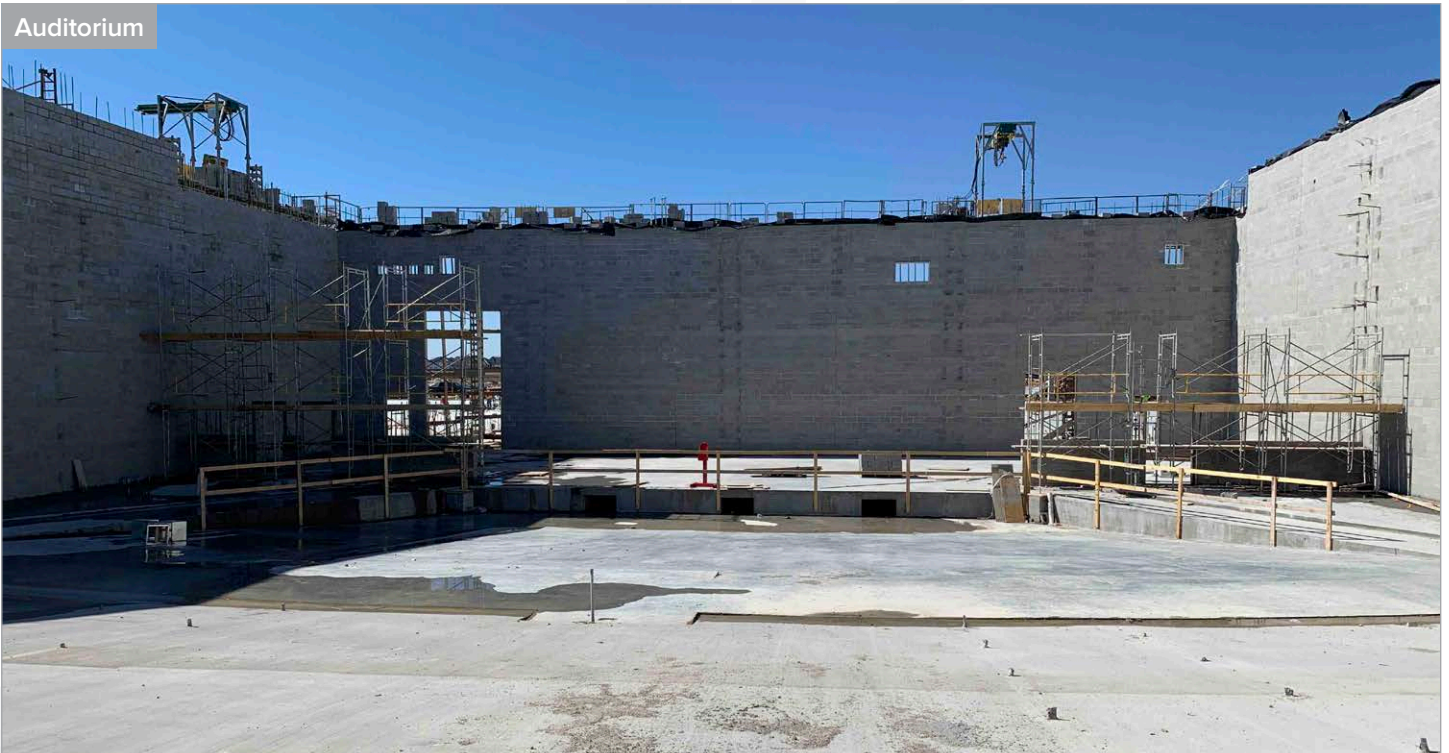
WALNUT GROVE HIGH SCHOOL (HS#3)

AS OF FEBRUARY 2022

Masonry Progress at Auditorium



Auditorium



BOARD UPDATE

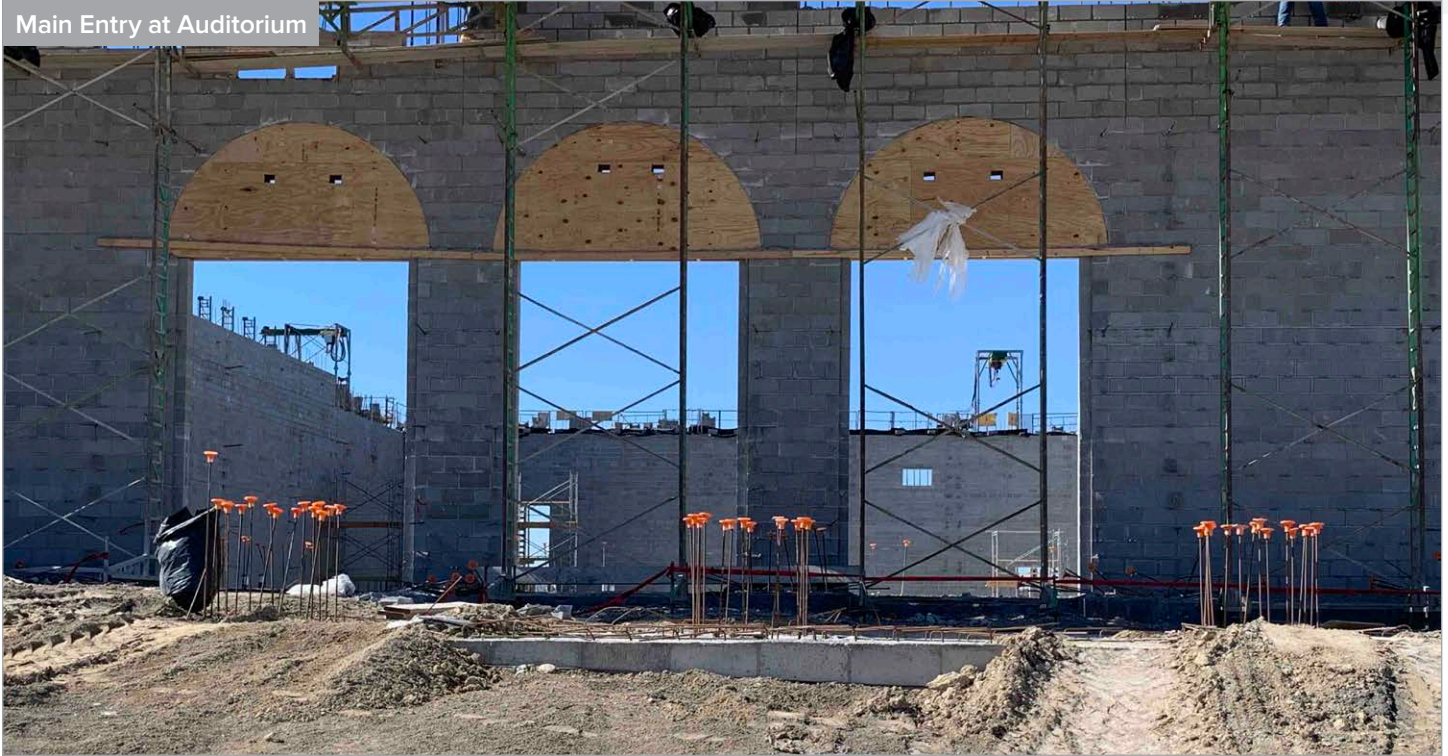
PROSPER INDEPENDENT SCHOOL DISTRICT



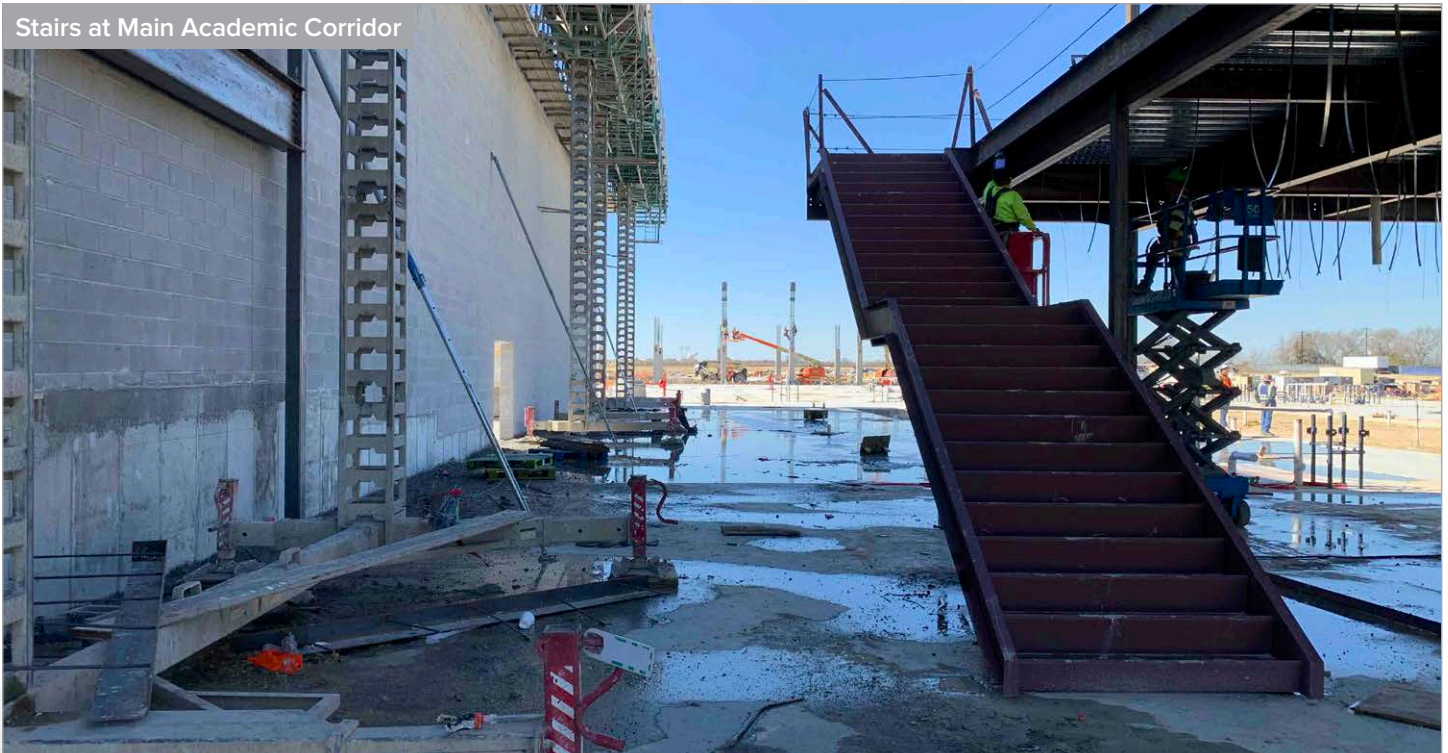
WALNUT GROVE HIGH SCHOOL (HS#3)

AS OF FEBRUARY 2022

Main Entry at Auditorium



Stairs at Main Academic Corridor



BOARD UPDATE

PROSPER INDEPENDENT SCHOOL DISTRICT



WALNUT GROVE HIGH SCHOOL (HS#3)

AS OF FEBRUARY 2022

Carton Forms at Multi-Purpose Facility (MPF)



Multi-Purpose Facility (MPF) Indoor Area



BOARD UPDATE

PROSPER INDEPENDENT SCHOOL DISTRICT



WALNUT GROVE HIGH SCHOOL (HS#3)

AS OF FEBRUARY 2022

Site Parking Reinforcing Steel

